

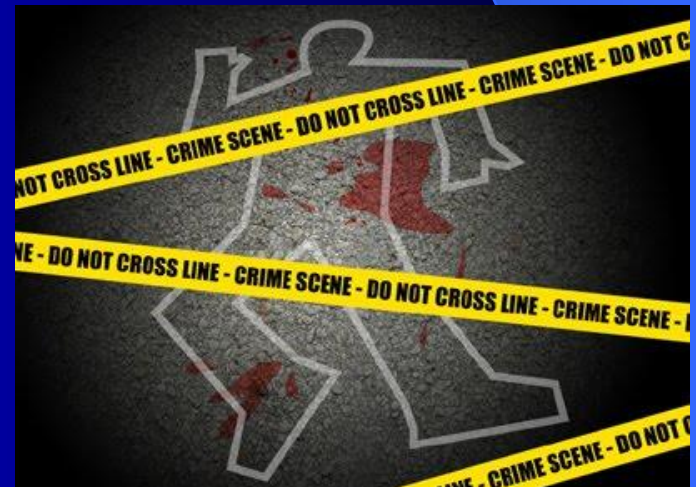
NCSSAR Crime Scene Requirements

Sgt. Mike Sullivan



Objectives

- Recognize potentially hazardous scenes
- Personal safety within the scene
- Identify potential evidence and how to preserve the evidence for law enforcement
- General scene recognition.



Objectives continued

- Investigative steps taken by Deputies and Detectives.
- What to do if you encounter a marijuana garden.
- What to do when you encounter a crime scene.
- Remember every find is a potential crime scene

What to do when you encounter a Crime Scene when searching

- Safety First!
- Report the scene location to IC and request a deputy.
- Determine need for medical assistance.
- If the subject is obviously deceased, do not enter the area
- Secure the scene



Encountering a Crime Scene continued

- Start thinking about scene preservation and documentation
 - Start a crime scene log, which should include:
 - Location
 - Dates / Time scene located
 - List names of those in the scene (or even near)
 - Times when they go in and out of crime scene
 - Scene description
 - Notes you think are important

Encountering Crime Scene continued

- If possible, take photos to document the scene as you found it
 - Don't post the photos on facebook or other social media
- Expect to be interviewed by an deputies / detectives
- The DA may issue a subpoena for you to testify in court.

Scene

- Look, Listen, Smell, but do not TOUCH.
- Try to note any items of interest.
- If you disturb anything (spent casing, clothing, etc.) take notes about it and be sure to let law enforcement know so they can document it.



Scene



- Utilize crime scene / flagging tape to secure scene.
 - Once an area is taped off, you should probably tape a larger area off
 - If the area is too small, anything outside the scene will likely be compromised if not destroyed.
 - Establishing an inner / outer Perimeter is smart

Scene

- Crime scenes should be secured and that security must be maintained.
- Do not allow personnel to enter the scene.
 - This includes family, members of the media, other SAR members and any other unauthorized personnel.
 - Do not subject yourself to danger trying to protect a scene. Inform people not to enter and advise law enforcement
- Do not talk to press regarding searches or your findings.
- If possible, back out exactly the way you entered-mark with flagging.

Things to remember

- If you're a dog handler, immediately gain control of your dog and remove the dog from the scene.
- All cadaver finds are considered crime scenes.



Things to remember, Continued

- If the subject is not obviously deceased, carefully approach, check vital signs.
- Do not move the subject.
- Remember your path.
- Remember that some evidence is small and you may not notice it when you discover the scene.



Crime Scene Conduct

- There should be no smoking, drinking, or eating within the crime scene.
 - DNA evidence can be spread by many means
- Do not add items to the scene
 - If you put your pack down and it's part of the scene, it may remain part of the scene

Conduct, continued



- Whenever around or within the scene, always remain professional.
- Remember: You never know who is watching or worse, who is videoing you. Crime scene conduct has come up in court cases.
- Defense attorneys are likely to argue that the crime scene was contaminated by various means.
 - One being YOU!

Crime Scene Documentation



Documentation



- Starts the minute you arrive on scene.
- The earliest documentation comes from what you see, hear, and smell.
- The scene will never be “as fresh” as it is when you arrive.
- The moment you enter, the scene is forever changed.



Photography

- Photographs should be taken as soon as possible.
- You want to preserve the scene in photographs so it can be reconstructed at a later date.
- Remember, every picture you take can end up in court.



Marijuana Gardens



- Marijuana gardens are often guarded by armed personnel.
 - Some of these individuals are not afraid to use deadly force to protect their investment.
 - At times, investigators have found booby traps and trip wires in and around the gardens.



Marijuana Gardens

- If you find a garden, back out and radio in your position.
 - If possible mark the position on your GPS.
- If you are ever encountered announce you are with Search and Rescue and looking for a lost or missing person

